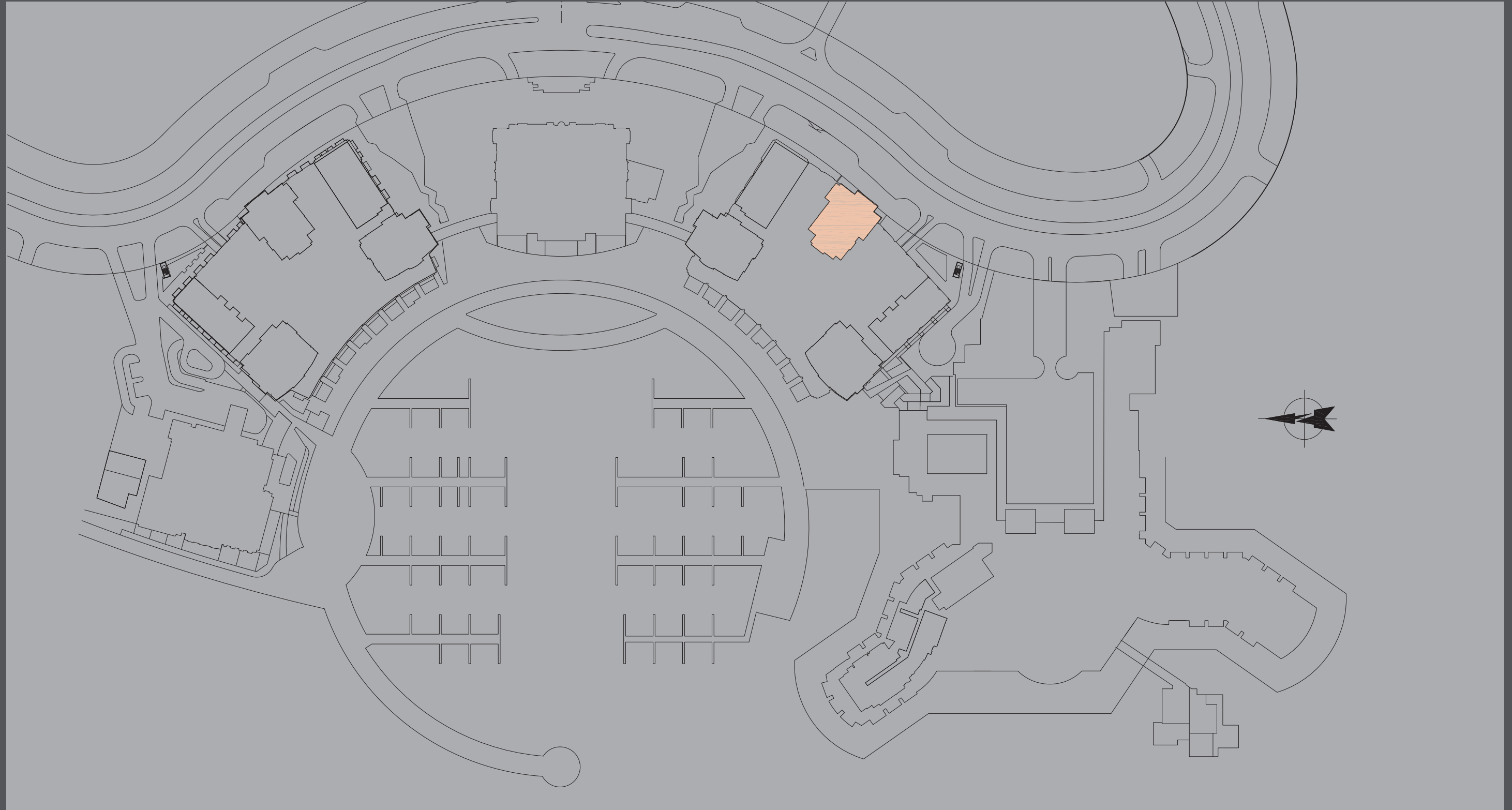


FLOOR PLANS

SOUTH T₂

دبي كريك رزیدنسز

DUBAI CREEK RESIDENCES

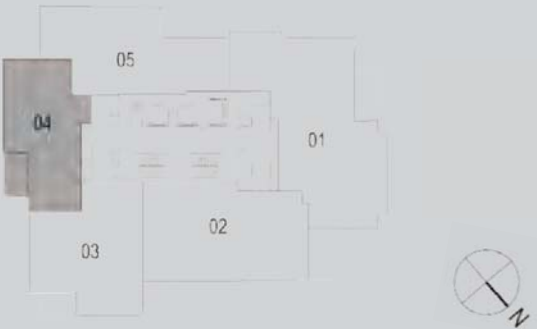


دبي كريك رزیدنسز
DUBAI CREEK RESIDENCES



SOUTH T2
1 BEDROOM
WITH TERRACE
UNIT 04
LEVELS 3-15
AND 17-32

	Sq.m	Sq.ft
Suite Area	85.51	920.42
Terrace Area	9.83	105.81
Total Area	95.34	1,026.23



Disclaimer: 1. All room dimensions are measured to structural elements and exclude wall finishes and construction tolerances. 2. All dimensions have been provided by our consultant architects. 3. All materials, dimensions & drawings are approximate. Information is subject to change without notice. 4. Actual suite area may vary from the stated area. Drawings not to scale. The developer reserves the right to make revisions. 5. Calculation of suite area is measured as the area bounded by the centre line of demising or partition walls separating one unit from another unit, the exterior face of all exterior walls, and the exterior face of the corridor wall enclosing the adjoining unit. 6. Calculation of balcony area is measured as the area bounded by the centre line of demising or partition walls separating one unit from another unit, the outmost face of the enclosing guard and the external face of the unit adjoining the balcony. 7. The units are measured at typical floor in the building. Columns may vary in size depending on the floor level. 8. Areas have been calculated in accordance with Dubai Land Department method of measurement as at October 2014.

دبي كريك رزیدنسز

DUBAI CREEK RESIDENCES

خور دبي
DUBAI CREEK HARBOUR

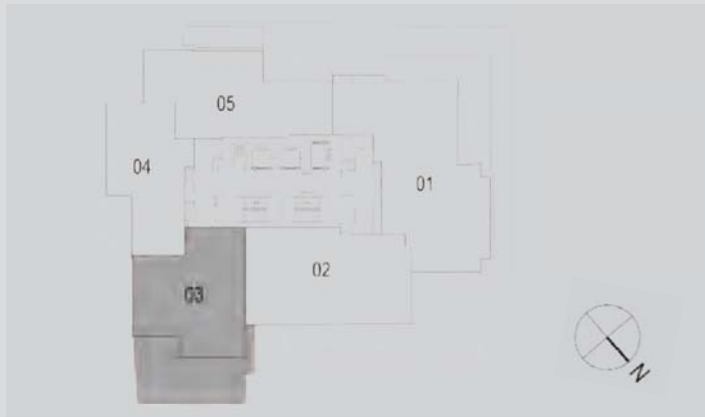
الخيران
THE LAGOONS

DUBAI
HOLDING



SOUTH T2
1 BEDROOM
WITH TERRACE
UNIT 03
LEVEL 3

	Sq.m	Sq.ft
Suite Area	101.87	1,096.52
Terrace Area	54.66	588.36
Total Area	156.53	1,684.87



Disclaimer: 1. All room dimensions are measured to structural elements and exclude wall finishes and construction tolerances. 2. All dimensions have been provided by our consultant architects. 3. All materials, dimensions & drawings are approximate. Information is subject to change without notice. 4. Actual suite area may vary from the stated area. Drawings not to scale. The developer reserves the right to make revisions. 5. Calculation of suite area is measured as the area bounded by the centre line of demising or partition walls separating one unit from another unit, the exterior face of all exterior walls, and the exterior face of the corridor wall enclosing the adjoining unit. 6. Calculation of balcony area is measured as the area bounded by the centre line of demising or partition walls separating one unit from another unit, the outmost face of the enclosing guard and the external face of the unit adjoining the balcony. 7. The units are measured at typical floor in the building. Columns may vary in size depending on the floor level. 8. Areas have been calculated in accordance with Dubai Land Department method of measurement as at October 2014.

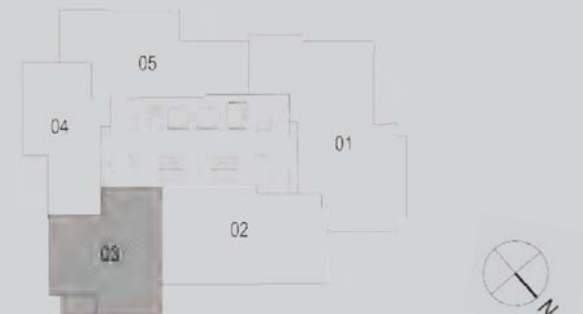


SOUTH T₂
1 BEDROOM
WITH TERRACE

UNIT 03

LEVELS 4-15
AND 17-32

	Sq.m	Sq.ft
Suite Area	101.87	1,096.52
Terrace Area	6.66	71.69
Total Area	108.53	1,168.21



Disclaimer: 1. All room dimensions are measured to structural elements and exclude wall finishes and construction tolerances. 2. All dimensions have been provided by our consultant architects. 3. All materials, dimensions & drawings are approximate. Information is subject to change without notice. 4. Actual suite area may vary from the stated area. Drawings not to scale. The developer reserves the right to make revisions. 5. Calculation of suite area is measured as the area bounded by the centre line of demising or partition walls separating one unit from another unit, the exterior face of all exterior walls, and the exterior face of the corridor wall enclosing the adjoining unit. 6. Calculation of balcony area is measured as the area bounded by the centre line of demising or partition walls separating one unit from another unit, the outmost face of the enclosing guard and the external face of the unit adjoining the balcony. 7. The units are measured at typical floor in the building. Columns may vary in size depending on the floor level. 8. Areas have been calculated in accordance with Dubai Land Department method of measurement as at October 2014.

دبي كريك رزیدنسز

DUBAI CREEK RESIDENCES

خور دبي
DUBAI CREEK HARBOUR

الخيران
THE LAGOONS

DUBAI
HOLDING



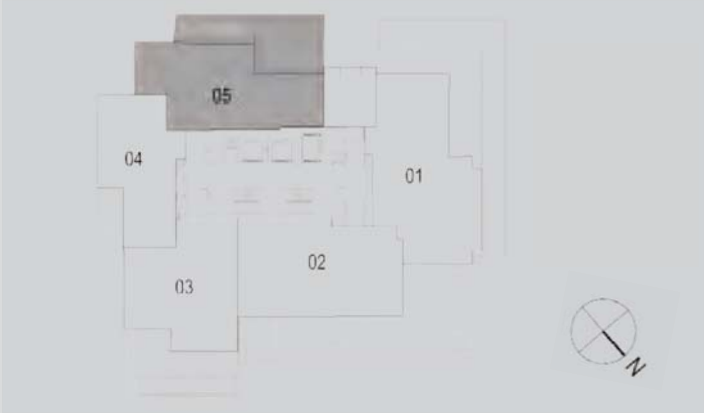
SOUTH T2

2 BEDROOMS
WITH TERRACE

UNIT 05

LEVEL 3

	Sq.m	Sq.ft
Suite Area	117.11	1,260.56
Terrace Area	44.65	480.61
Total Area	161.76	1,741.17



Disclaimer: 1. All room dimensions are measured to structural elements and exclude wall finishes and construction tolerances. 2. All dimensions have been provided by our consultant architects. 3. All materials, dimensions & drawings are approximate. Information is subject to change without notice. 4. Actual suite area may vary from the stated area. Drawings not to scale. The developer reserves the right to make revisions. 5. Calculation of suite area is measured as the area bounded by the centre line of demising or partition walls separating one unit from another unit, the exterior face of all exterior walls, and the exterior face of the corridor wall enclosing the adjoining unit. 6. Calculation of balcony area is measured as the area bounded by the centre line of demising or partition walls separating one unit from another unit, the outmost face of the enclosing guard and the external face of the unit adjoining the balcony. 7. The units are measured at typical floor in the building. Columns may vary in size depending on the floor level. 8. Areas have been calculated in accordance with Dubai Land Department method of measurement as at October 2014.

دبي
DUBAI CREEK HARBOUR

الخيران
THE LAGOONS

DUBAI
HOLDING



دبي كريك رزиденسز DUBAI CREEK RESIDENCES

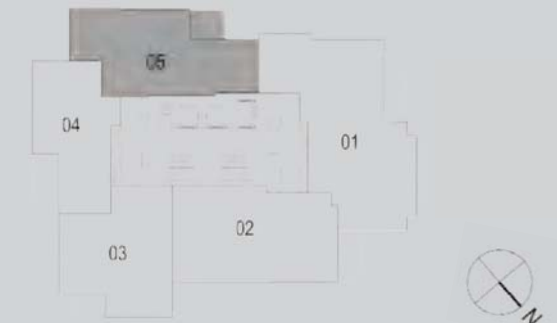


SOUTH T₂
2 BEDROOMS
WITH TERRACE

UNIT 05

LEVELS 4-15
AND 17-32

	Sq.m	Sq.ft
Suite Area	117.11	1,260.56
Terrace Area	9.65	103.87
Total Area	126.76	1,364.43



Disclaimer: 1. All room dimensions are measured to structural elements and exclude wall finishes and construction tolerances. 2. All dimensions have been provided by our consultant architects. 3. All materials, dimensions & drawings are approximate. Information is subject to change without notice. 4. Actual suite area may vary from the stated area. Drawings not to scale. The developer reserves the right to make revisions. 5. Calculation of suite area is measured as the area bounded by the centre line of demising or partition walls separating one unit from another unit, the exterior face of all exterior walls, and the exterior face of the corridor wall enclosing the adjoining unit. 6. Calculation of balcony area is measured as the area bounded by the centre line of demising or partition walls separating one unit from another unit, the outmost face of the enclosing guard and the external face of the unit adjoining the balcony. 7. The units are measured at typical floor in the building. Columns may vary in size depending on the floor level. 8. Areas have been calculated in accordance with Dubai Land Department method of measurement as at October 2014.

دبي كريك رزیدنسز

DUBAI CREEK RESIDENCES

خور دبي
DUBAI CREEK HARBOUR

الخيران
THE LAGOONS

DUBAI
HOLDING



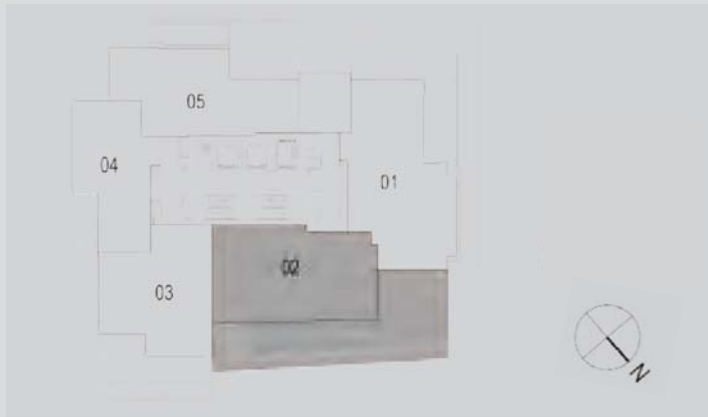
SOUTH T₂

2 BEDROOMS
WITH TERRACE

UNIT 02

LEVEL 3

	Sq.m	Sq.ft
Suite Area	134.90	1,452.05
Terrace Area	112.47	1,210.62
Total Area	247.37	2,662.67



Disclaimer: 1. All room dimensions are measured to structural elements and exclude wall finishes and construction tolerances. 2. All dimensions have been provided by our consultant architects. 3. All materials, dimensions & drawings are approximate. Information is subject to change without notice. 4. Actual suite area may vary from the stated area. Drawings not to scale. The developer reserves the right to make revisions. 5. Calculation of suite area is measured as the area bounded by the centre line of demising or partition walls separating one unit from another unit, the exterior face of all exterior walls, and the exterior face of the corridor wall enclosing the adjoining unit. 6. Calculation of balcony area is measured as the area bounded by the centre line of demising or partition walls separating one unit from another unit, the outmost face of the enclosing guard and the external face of the unit adjoining the balcony. 7. The units are measured at typical floor in the building. Columns may vary in size depending on the floor level. 8. Areas have been calculated in accordance with Dubai Land Department method of measurement as at October 2014.

دبي كريك رزиденسز
DUBAI CREEK RESIDENCES

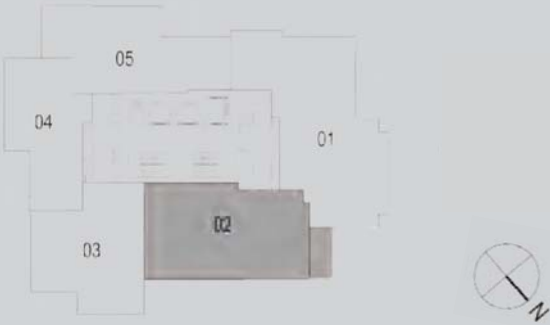
SOUTH T2
2 BEDROOMS
WITH TERRACE

UNIT 02

LEVELS 4-15
AND 17-32



	Sq.m	Sq.ft
Suite Area	134.90	1,452.05
Terrace Area	10.68	114.96
Total Area	145.58	1,567.01



Disclaimer: 1. All room dimensions are measured to structural elements and exclude wall finishes and construction tolerances. 2. All dimensions have been provided by our consultant architects. 3. All materials, dimensions & drawings are approximate. Information is subject to change without notice. 4. Actual suite area may vary from the stated area. Drawings not to scale. The developer reserves the right to make revisions. 5. Calculation of suite area is measured as the area bounded by the centre line of demising or partition walls separating one unit from another unit, the exterior face of all exterior walls, and the exterior face of the corridor wall enclosing the adjoining unit. 6. Calculation of balcony area is measured as the area bounded by the centre line of demising or partition walls separating one unit from another unit, the outmost face of the enclosing guard and the external face of the unit adjoining the balcony. 7. The units are measured at typical floor in the building. Columns may vary in size depending on the floor level. 8. Areas have been calculated in accordance with Dubai Land Department method of measurement as at October 2014.

دبي كريك رزیدنسز

DUBAI CREEK RESIDENCES

خور دبي
DUBAI CREEK HARBOUR

الخيران
THE LAGOONS

DUBAI
HOLDING

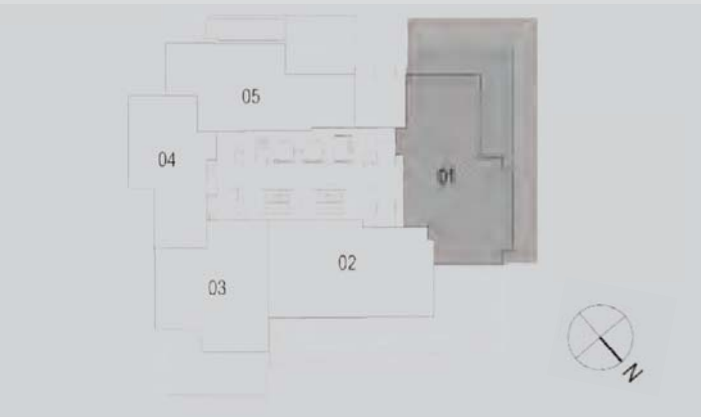


SOUTH T₂

2 BEDROOMS
WITH TERRACE

UNIT 01
LEVEL 3

	Sq.m	Sq.ft
Suite Area	143.47	1,544.30
Terrace Area	113.41	1,220.74
Total Area	256.88	2,765.03

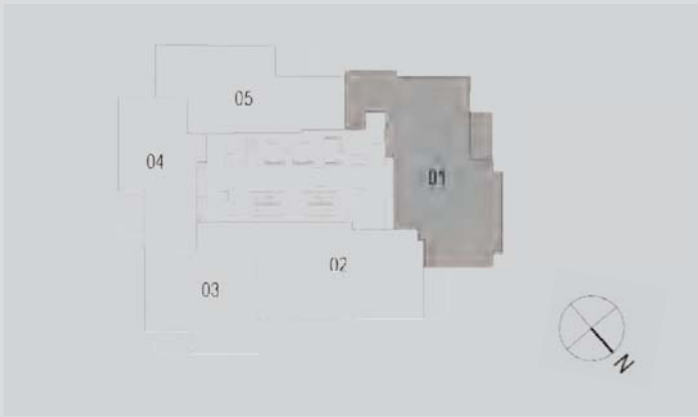


Disclaimer: 1. All room dimensions are measured to structural elements and exclude wall finishes and construction tolerances. 2. All dimensions have been provided by our consultant architects. 3. All materials, dimensions & drawings are approximate. Information is subject to change without notice. 4. Actual suite area may vary from the stated area. Drawings not to scale. The developer reserves the right to make revisions. 5. Calculation of suite area is measured as the area bounded by the centre line of demising or partition walls separating one unit from another unit, the exterior face of all exterior walls, and the exterior face of the corridor wall enclosing the adjoining unit. 6. Calculation of balcony area is measured as the area bounded by the centre line of demising or partition walls separating one unit from another unit, the outmost face of the enclosing guard and the external face of the unit adjoining the balcony. 7. The units are measured at typical floor in the building. Columns may vary in size depending on the floor level. 8. Areas have been calculated in accordance with Dubai Land Department method of measurement as at October 2014.



SOUTH T2
3 BEDROOMS
WITH TERRACE
UNIT 01
LEVELS 6
AND 26

	Sq.m	Sq.ft
Suite Area	167.23	1,800.05
Terrace Area	8.93	96.12
Total Area	176.16	1,896.17



Disclaimer: 1. All room dimensions are measured to structural elements and exclude wall finishes and construction tolerances. 2. All dimensions have been provided by our consultant architects. 3. All materials, dimensions & drawings are approximate. Information is subject to change without notice. 4. Actual suite area may vary from the stated area. Drawings not to scale. The developer reserves the right to make revisions. 5. Calculation of suite area is measured as the area bounded by the centre line of demising or partition walls separating one unit from another unit, the exterior face of all exterior walls, and the exterior face of the corridor wall enclosing the adjoining unit. 6. Calculation of balcony area is measured as the area bounded by the centre line of demising or partition walls separating one unit from another unit, the outmost face of the enclosing guard and the external face of the unit adjoining the balcony. 7. The units are measured at typical floor in the building. Columns may vary in size depending on the floor level. 8. Areas have been calculated in accordance with Dubai Land Department method of measurement as at October 2014.

دبي كريك رزیدنسز

DUBAI CREEK RESIDENCES

خور دبي
DUBAI CREEK HARBOUR

الخيران
THE LAGOONS

DUBAI
HOLDING



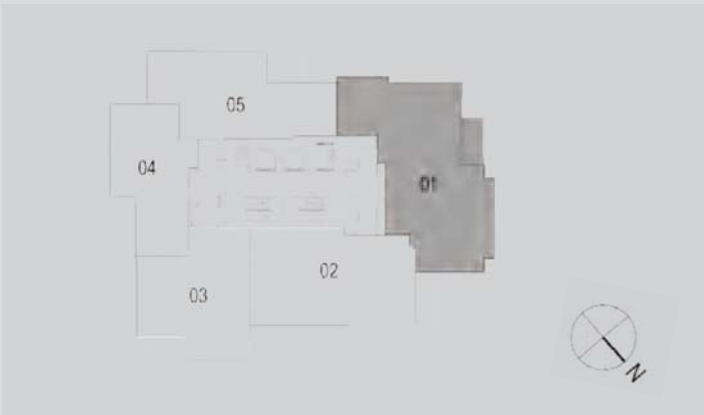
SOUTH T₂

3 BEDROOMS
WITH TERRACE

UNIT 01

LEVELS 4-5, 7-15,
17-25 AND 27-32

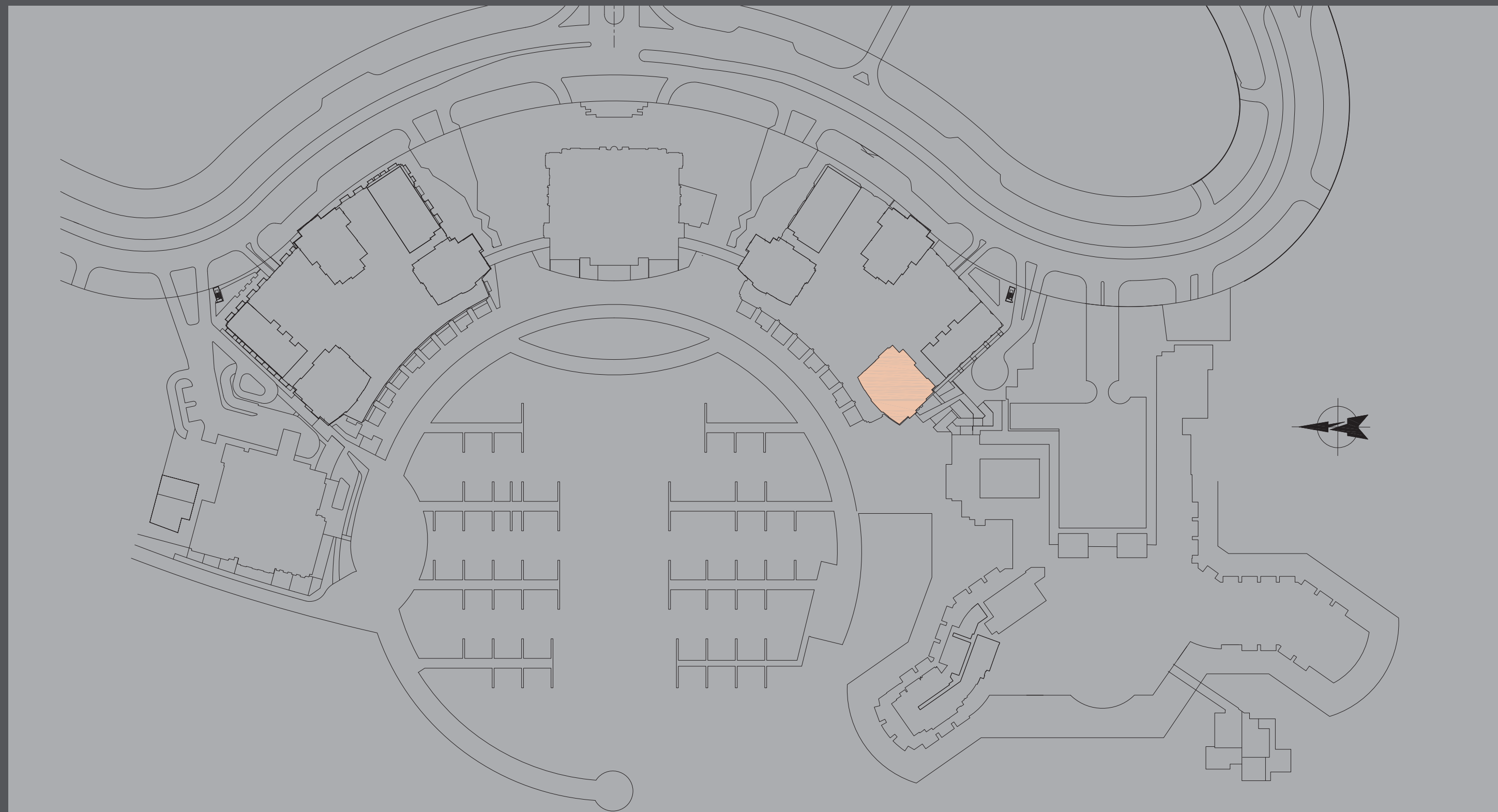
	Sq.m	Sq.ft
Suite Area	170.52	1,835.46
Terrace Area	8.92	96.01
Total Area	179.44	1,931.48



Disclaimer: 1. All room dimensions are measured to structural elements and exclude wall finishes and construction tolerances. 2. All dimensions have been provided by our consultant architects. 3. All materials, dimensions & drawings are approximate. Information is subject to change without notice. 4. Actual suite area may vary from the stated area. Drawings not to scale. The developer reserves the right to make revisions. 5. Calculation of suite area is measured as the area bounded by the centre line of demising or partition walls separating one unit from another unit, the exterior face of all exterior walls, and the exterior face of the corridor wall enclosing the adjoining unit. 6. Calculation of balcony area is measured as the area bounded by the centre line of demising or partition walls separating one unit from another unit, the outmost face of the enclosing guard and the external face of the unit adjoining the balcony. 7. The units are measured at typical floor in the building. Columns may vary in size depending on the floor level. 8. Areas have been calculated in accordance with Dubai Land Department method of measurement as at October 2014.

دبي كريك رزیدنسز
DUBAI CREEK RESIDENCES

FLOOR PLANS
SOUTH T₃



دبي كريك رزیدنسز

DUBAI CREEK RESIDENCES

خور دبي
DUBAI CREEK HARBOUR

الخيران
THE LAGOONS

DUBAI
HOLDING



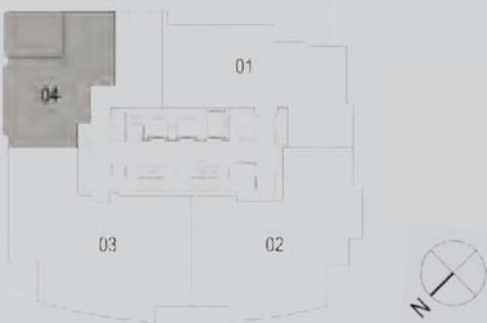
SOUTH T₃

1 BEDROOM
WITH TERRACE

UNIT 04

LEVEL 3

	Sq.m	Sq.ft
Suite Area	143.56	1,545.27
Terrace Area	48.91	526.46
Total Area	192.47	2,071.73

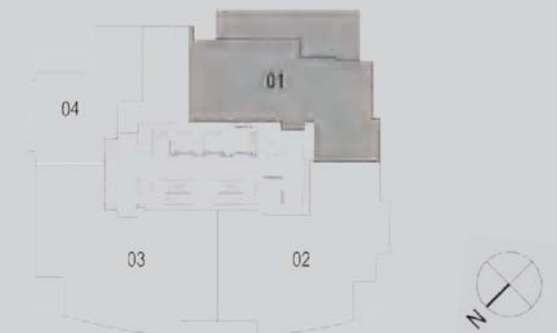


Disclaimer: 1. All room dimensions are measured to structural elements and exclude wall finishes and construction tolerances. 2. All dimensions have been provided by our consultant architects. 3. All materials, dimensions & drawings are approximate. Information is subject to change without notice. 4. Actual suite area may vary from the stated area. Drawings not to scale. The developer reserves the right to make revisions. 5. Calculation of suite area is measured as the area bounded by the centre line of demising or partition walls separating one unit from another unit, the exterior face of all exterior walls, and the exterior face of the corridor wall enclosing the adjoining unit. 6. Calculation of balcony area is measured as the area bounded by the centre line of demising or partition walls separating one unit from another unit, the outmost face of the enclosing guard and the external face of the unit adjoining the balcony. 7. The units are measured at typical floor in the building. Columns may vary in size depending on the floor level. 8. Areas have been calculated in accordance with Dubai Land Department method of measurement as at October 2014.



SOUTH T₃
2 BEDROOMS
WITH TERRACE
UNIT 01
LEVEL 3

	Sq.m	Sq.ft
Suite Area	90.34	972.41
Terrace Area	25.36	272.97
Total Area	115.70	1,245.38



Disclaimer: 1. All room dimensions are measured to structural elements and exclude wall finishes and construction tolerances. 2. All dimensions have been provided by our consultant architects. 3. All materials, dimensions & drawings are approximate. Information is subject to change without notice. 4. Actual suite area may vary from the stated area. Drawings not to scale. The developer reserves the right to make revisions. 5. Calculation of suite area is measured as the area bounded by the centre line of demising or partition walls separating one unit from another unit, the exterior face of all exterior walls, and the exterior face of the corridor wall enclosing the adjoining unit. 6. Calculation of balcony area is measured as the area bounded by the centre line of demising or partition walls separating one unit from another unit, the outmost face of the enclosing guard and the external face of the unit adjoining the balcony. 7. The units are measured at typical floor in the building. Columns may vary in size depending on the floor level. 8. Areas have been calculated in accordance with Dubai Land Department method of measurement as at October 2014.

دبي كريك رزیدنسز

DUBAI CREEK RESIDENCES

خور دبي
DUBAI CREEK HARBOUR

الخيران
THE LAGOONS

DUBAI
HOLDING



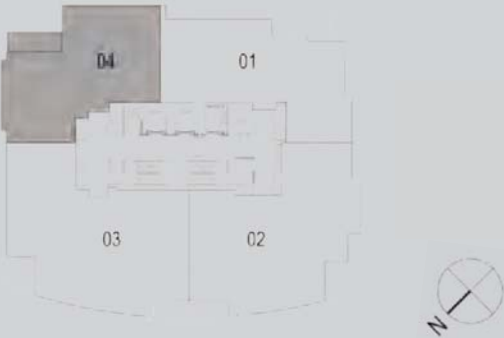
SOUTH T₃

2 BEDROOMS
WITH TERRACE

UNIT 04

LEVELS 4-15
AND 17-27

	Sq.m	Sq.ft
Suite Area	137.61	1,481.22
Terrace Area	9.67	104.09
Total Area	147.28	1,585.31

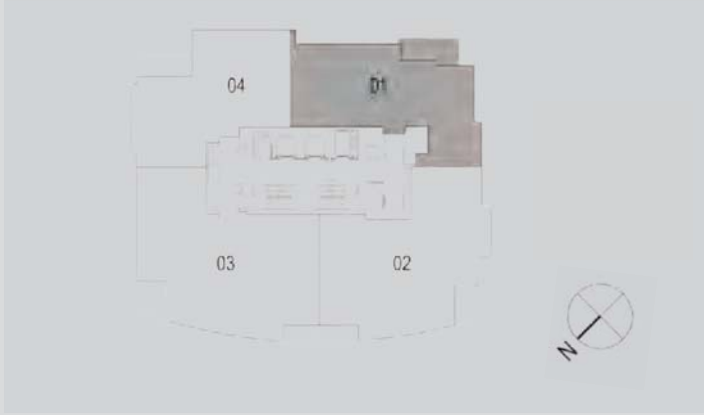


Disclaimer: 1. All room dimensions are measured to structural elements and exclude wall finishes and construction tolerances. 2. All dimensions have been provided by our consultant architects. 3. All materials, dimensions & drawings are approximate. Information is subject to change without notice. 4. Actual suite area may vary from the stated area. Drawings not to scale. The developer reserves the right to make revisions. 5. Calculation of suite area is measured as the area bounded by the centre line of demising or partition walls separating one unit from another unit, the exterior face of all exterior walls, and the exterior face of the corridor wall enclosing the adjoining unit. 6. Calculation of balcony area is measured as the area bounded by the centre line of demising or partition walls separating one unit from another unit, the outmost face of the enclosing guard and the external face of the unit adjoining the balcony. 7. The units are measured at typical floor in the building. Columns may vary in size depending on the floor level. 8. Areas have been calculated in accordance with Dubai Land Department method of measurement as at October 2014.



SOUTH T₃
2 BEDROOMS
WITH TERRACE
UNIT 01
LEVELS 6-26

	Sq.m	Sq.ft
Suite Area	140.54	1,512.76
Terrace Area	12.36	133.04
Total Area	152.90	1,645.80



Disclaimer: 1. All room dimensions are measured to structural elements and exclude wall finishes and construction tolerances. 2. All dimensions have been provided by our consultant architects. 3. All materials, dimensions & drawings are approximate. Information is subject to change without notice. 4. Actual suite area may vary from the stated area. Drawings not to scale. The developer reserves the right to make revisions. 5. Calculation of suite area is measured as the area bounded by the centre line of demising or partition walls separating one unit from another unit, the exterior face of all exterior walls, and the exterior face of the corridor wall enclosing the adjoining unit. 6. Calculation of balcony area is measured as the area bounded by the centre line of demising or partition walls separating one unit from another unit, the outmost face of the enclosing guard and the external face of the unit adjoining the balcony. 7. The units are measured at typical floor in the building. Columns may vary in size depending on the floor level. 8. Areas have been calculated in accordance with Dubai Land Department method of measurement as at October 2014.

دبي كريك رزیدنسز

DUBAI CREEK RESIDENCES

خور دبي
DUBAI CREEK HARBOUR

الخيران
THE LAGOONS

DUBAI
HOLDING



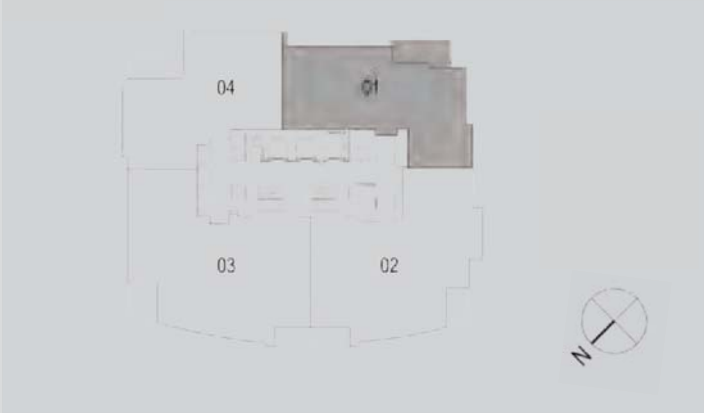
SOUTH T₃

2 BEDROOMS
WITH TERRACE

UNIT 01

LEVELS 4-15
AND 17-27

	Sq.m	Sq.ft
Suite Area	143.38	1,543.33
Terrace Area	12.36	133.04
Total Area	155.74	1,676.37



Disclaimer: 1. All room dimensions are measured to structural elements and exclude wall finishes and construction tolerances. 2. All dimensions have been provided by our consultant architects. 3. All materials, dimensions & drawings are approximate. Information is subject to change without notice. 4. Actual suite area may vary from the stated area. Drawings not to scale. The developer reserves the right to make revisions. 5. Calculation of suite area is measured as the area bounded by the centre line of demising or partition walls separating one unit from another unit, the exterior face of all exterior walls, and the exterior face of the corridor wall enclosing the adjoining unit. 6. Calculation of balcony area is measured as the area bounded by the centre line of demising or partition walls separating one unit from another unit, the outmost face of the enclosing guard and the external face of the unit adjoining the balcony. 7. The units are measured at typical floor in the building. Columns may vary in size depending on the floor level. 8. Areas have been calculated in accordance with Dubai Land Department method of measurement as at October 2014.

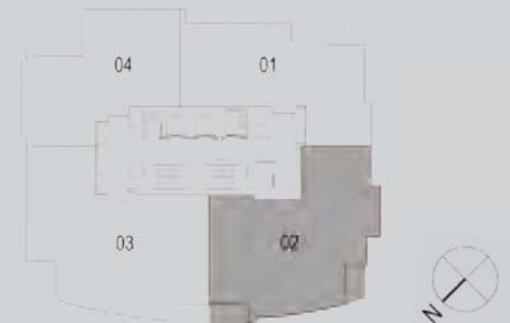


SOUTH T₃
3 BEDROOMS
WITH TERRACE

UNIT 02

LEVELS 3-15
AND 17-27

	Sq.m	Sq.ft
Suite Area	182.49	1,964.31
Terrace Area	14.72	158.44
Total Area	197.21	2,122.75



Disclaimer: 1. All room dimensions are measured to structural elements and exclude wall finishes and construction tolerances. 2. All dimensions have been provided by our consultant architects. 3. All materials, dimensions & drawings are approximate. Information is subject to change without notice. 4. Actual suite area may vary from the stated area. Drawings not to scale. The developer reserves the right to make revisions. 5. Calculation of suite area is measured as the area bounded by the centre line of demising or partition walls separating one unit from another unit, the exterior face of all exterior walls, and the exterior face of the corridor wall enclosing the adjoining unit. 6. Calculation of balcony area is measured as the area bounded by the centre line of demising or partition walls separating one unit from another unit, the outmost face of the enclosing guard and the external face of the unit adjoining the balcony. 7. The units are measured at typical floor in the building. Columns may vary in size depending on the floor level. 8. Areas have been calculated in accordance with Dubai Land Department method of measurement as at October 2014.

دبي كريك رزیدنسز

DUBAI CREEK RESIDENCES

خور دبي
DUBAI CREEK HARBOUR

الخيران
THE LAGOONS

DUBAI
HOLDING



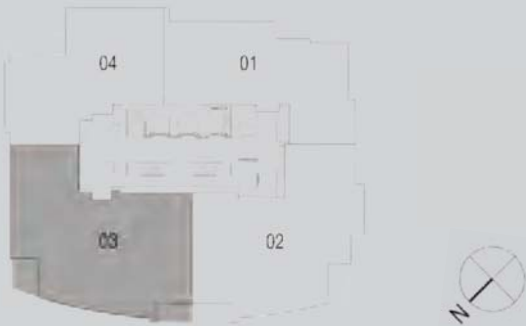
SOUTH T₃

3 BEDROOMS
WITH TERRACE

UNIT 03

LEVELS 3-15
AND 17-27

	Sq.m	Sq.ft
Suite Area	197.62	2,127.16
Terrace Area	16.57	178.36
Total Area	214.19	2,305.52



Disclaimer: 1. All room dimensions are measured to structural elements and exclude wall finishes and construction tolerances. 2. All dimensions have been provided by our consultant architects. 3. All materials, dimensions & drawings are approximate. Information is subject to change without notice. 4. Actual suite area may vary from the stated area. Drawings not to scale. The developer reserves the right to make revisions. 5. Calculation of suite area is measured as the area bounded by the centre line of demising or partition walls separating one unit from another unit, the exterior face of all exterior walls, and the exterior face of the corridor wall enclosing the adjoining unit. 6. Calculation of balcony area is measured as the area bounded by the centre line of demising or partition walls separating one unit from another unit, the outmost face of the enclosing guard and the external face of the unit adjoining the balcony. 7. The units are measured at typical floor in the building. Columns may vary in size depending on the floor level. 8. Areas have been calculated in accordance with Dubai Land Department method of measurement as at October 2014.

دُوبَايْ DUBAI CREEK HARBOUR

الخيران
THE LAGOONS



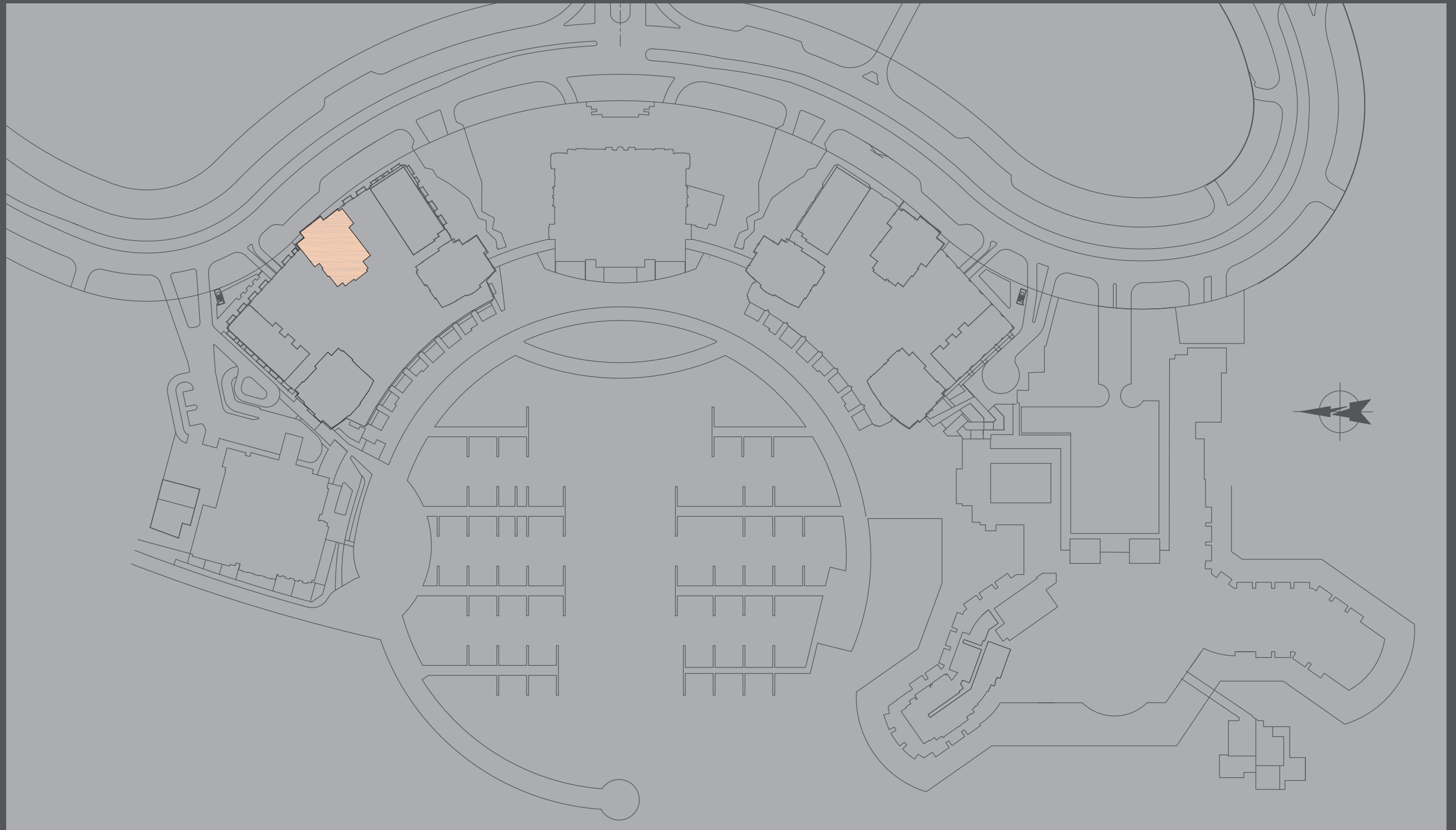
emaar.com

CONTACT DETAILS

For more information on Dubai Creek Residences, please visit
Emaar Pavilion, Mohammed Bin Rashid Boulevard, Downtown Dubai
or call 800 36227 (UAE) +971 4 366 1688 (International)

FLOOR
PLANS
NORTH T₂

دبي كريك رزیدنسز
DUBAI CREEK RESIDENCES



دبي كريك رزیدنسز
DUBAI CREEK RESIDENCES

فـجـة دـبـي
DUBAI CREEK HARBOUR

الخـيـران
THE LAGOONS

DUBAI
HOLDING



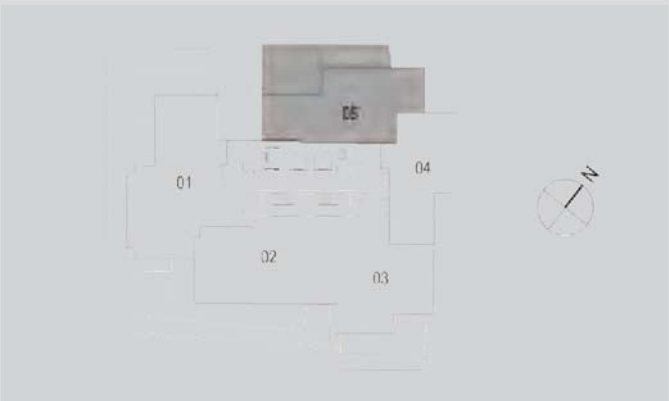
NORTH T₂

2 BEDROOMS
WITH TERRACE

UNIT 05

LEVEL 3

	Sq.m	Sq.ft
Suite Area	117.11	1,260.56
Terrace Area	44.65	480.61
Total Area	161.76	1,741.17



Disclaimer: 1. All room dimensions are measured to structural elements and exclude wall finishes and construction tolerances. 2. All dimensions have been provided by our consultant architects. 3. All materials, dimensions & drawings are approximate. Information is subject to change without notice. 4. Actual suite area may vary from the stated area. Drawings not to scale. The developer reserves the right to make revisions. 5. Calculation of suite area is measured as the area bounded by the centre line of demising or partition walls separating one unit from another unit, the exterior face of all exterior walls, and the exterior face of the corridor wall enclosing the adjoining unit. 6. Calculation of balcony area is measured as the area bounded by the centre line of demising or partition walls separating one unit from another unit, the outmost face of the enclosing guard and the external face of the unit adjoining the balcony. 7. The units are measured at typical floor in the building. Columns may vary in size depending on the floor level. 8. Areas have been calculated in accordance with Dubai Land Department method of measurement as at October 2014.

دبي كريك رزیدنسز
DUBAI CREEK RESIDENCES

دبي
DUBAI CREEK HARBOUR

الخيران
THE LAGOONS

DUBAI
HOLDING



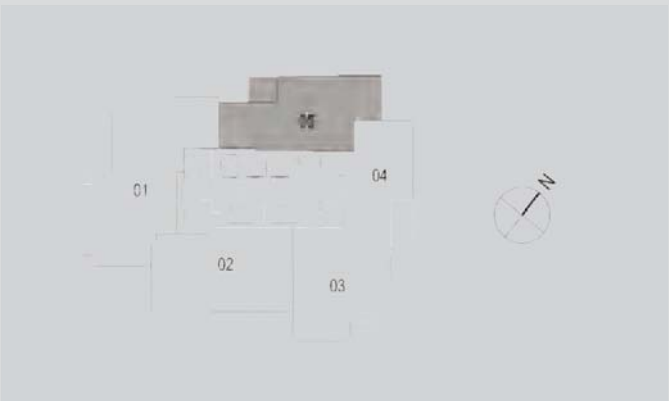
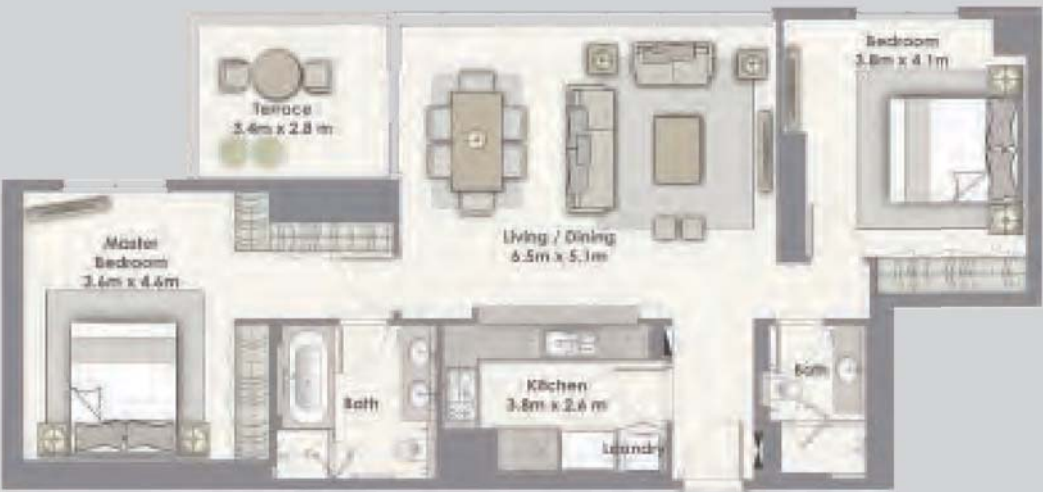
NORTH T₂

2 BEDROOMS
WITH TERRACE

UNIT 05

LEVELS 4-15
AND 17-32

	Sq.m	Sq.ft
Suite Area	117.11	1,260.56
Terrace Area	9.65	103.87
Total Area	126.76	1,364.43



Disclaimer: 1. All room dimensions are measured to structural elements and exclude wall finishes and construction tolerances. 2. All dimensions have been provided by our consultant architects. 3. All materials, dimensions & drawings are approximate. Information is subject to change without notice. 4. Actual suite area may vary from the stated area. Drawings not to scale. The developer reserves the right to make revisions. 5. Calculation of suite area is measured as the area bounded by the centre line of demising or partition walls separating one unit from another unit, the exterior face of all exterior walls, and the exterior face of the corridor wall enclosing the adjoining unit. 6. Calculation of balcony area is measured as the area bounded by the centre line of demising or partition walls separating one unit from another unit, the outmost face of the enclosing guard and the external face of the unit adjoining the balcony. 7. The units are measured at typical floor in the building. Columns may vary in size depending on the floor level. 8. Areas have been calculated in accordance with Dubai Land Department method of measurement as at October 2014.

دبي كريك رزیدنسز
DUBAI CREEK RESIDENCES

دبي
DUBAI CREEK HARBOUR

الخيران
THE LAGOONS

DUBAI
HOLDING



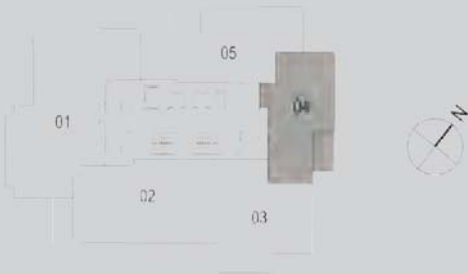
NORTH T₂

1 BEDROOM
WITH TERRACE

UNIT 04

LEVELS 3-15
AND 17-32

	Sq.m	Sq.ft
Suite Area	85.51	920.42
Terrace Area	9.83	105.81
Total Area	95.34	1,026.23



Disclaimer: 1. All room dimensions are measured to structural elements and exclude wall finishes and construction tolerances. 2. All dimensions have been provided by our consultant architects. 3. All materials, dimensions & drawings are approximate. Information is subject to change without notice. 4. Actual suite area may vary from the stated area. Drawings not to scale. The developer reserves the right to make revisions. 5. Calculation of suite area is measured as the area bounded by the centre line of demising or partition walls separating one unit from another unit, the exterior face of all exterior walls, and the exterior face of the corridor wall enclosing the adjoining unit. 6. Calculation of balcony area is measured as the area bounded by the centre line of demising or partition walls separating one unit from another unit, the outmost face of the enclosing guard and the external face of the unit adjoining the balcony. 7. The units are measured at typical floor in the building. Columns may vary in size depending on the floor level. 8. Areas have been calculated in accordance with Dubai Land Department method of measurement as at October 2014.

دبي كريك رزیدنسز
DUBAI CREEK RESIDENCES

دبي
DUBAI CREEK HARBOUR

الخيران
THE LAGOONS

DUBAI
HOLDING



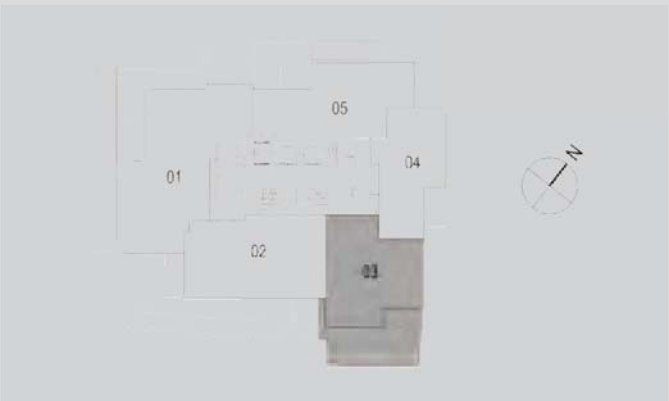
NORTH T₂

1 BEDROOM
WITH TERRACE

UNIT 03

LEVEL 3

	Sq.m	Sq.ft
Suite Area	101.87	1,096.52
Terrace Area	54.66	588.36
Total Area	156.53	1,684.87



Disclaimer: 1. All room dimensions are measured to structural elements and exclude wall finishes and construction tolerances. 2. All dimensions have been provided by our consultant architects. 3. All materials, dimensions & drawings are approximate. Information is subject to change without notice. 4. Actual suite area may vary from the stated area. Drawings not to scale. The developer reserves the right to make revisions. 5. Calculation of suite area is measured as the area bounded by the centre line of demising or partition walls separating one unit from another unit, the exterior face of all exterior walls, and the exterior face of the corridor wall enclosing the adjoining unit. 6. Calculation of balcony area is measured as the area bounded by the centre line of demising or partition walls separating one unit from another unit, the outmost face of the enclosing guard and the external face of the unit adjoining the balcony. 7. The units are measured at typical floor in the building. Columns may vary in size depending on the floor level. 8. Areas have been calculated in accordance with Dubai Land Department method of measurement as at October 2014.

دبي كريك رزیدنسز
DUBAI CREEK RESIDENCES

دبي
DUBAI CREEK HARBOUR

الخيران
THE LAGOONS

DUBAI
HOLDING



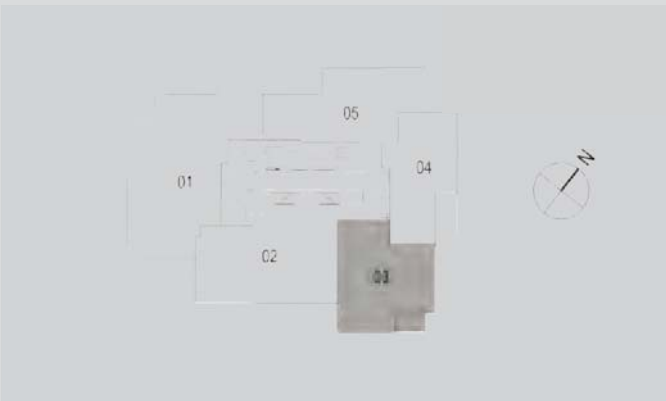
NORTH T₂

1 BEDROOM
WITH TERRACE

UNIT 03

LEVELS 4-15
AND 17-32

	Sq.m	Sq.ft
Suite Area	101.87	1,096.52
Terrace Area	6.66	71.69
Total Area	108.53	1,168.21



Disclaimer: 1. All room dimensions are measured to structural elements and exclude wall finishes and construction tolerances. 2. All dimensions have been provided by our consultant architects. 3. All materials, dimensions & drawings are approximate. Information is subject to change without notice. 4. Actual suite area may vary from the stated area. Drawings not to scale. The developer reserves the right to make revisions. 5. Calculation of suite area is measured as the area bounded by the centre line of demising or partition walls separating one unit from another unit, the exterior face of all exterior walls, and the exterior face of the corridor wall enclosing the adjoining unit. 6. Calculation of balcony area is measured as the area bounded by the centre line of demising or partition walls separating one unit from another unit, the outmost face of the enclosing guard and the external face of the unit adjoining the balcony. 7. The units are measured at typical floor in the building. Columns may vary in size depending on the floor level. 8. Areas have been calculated in accordance with Dubai Land Department method of measurement as at October 2014.

دبي كريك رزیدنسز
DUBAI CREEK RESIDENCES

دبي
DUBAI CREEK HARBOUR

الخيران
THE LAGOONS

DUBAI
HOLDING



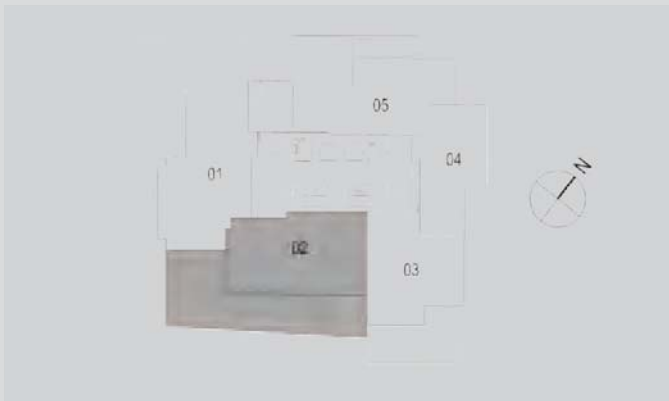
NORTH T₂

2 BEDROOMS
WITH TERRACE

UNIT 02

LEVEL 3

	Sq.m	Sq.ft
Suite Area	134.90	1,452.05
Terrace Area	112.47	1,210.62
Total Area	247.37	2,662.67



Disclaimer: 1. All room dimensions are measured to structural elements and exclude wall finishes and construction tolerances. 2. All dimensions have been provided by our consultant architects. 3. All materials, dimensions & drawings are approximate. Information is subject to change without notice. 4. Actual suite area may vary from the stated area. Drawings not to scale. The developer reserves the right to make revisions. 5. Calculation of suite area is measured as the area bounded by the centre line of demising or partition walls separating one unit from another unit, the exterior face of all exterior walls, and the exterior face of the corridor wall enclosing the adjoining unit. 6. Calculation of balcony area is measured as the area bounded by the centre line of demising or partition walls separating one unit from another unit, the outmost face of the enclosing guard and the external face of the unit adjoining the balcony. 7. The units are measured at typical floor in the building. Columns may vary in size depending on the floor level. 8. Areas have been calculated in accordance with Dubai Land Department method of measurement as at October 2014.

دبي كريك رزیدنسز
DUBAI CREEK RESIDENCES

دبي
DUBAI CREEK HARBOUR

الخيران
THE LAGOONS

DUBAI
HOLDING



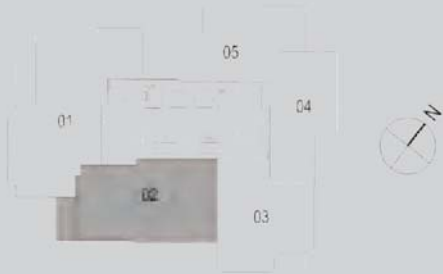
NORTH T₂

2 BEDROOMS
WITH TERRACE

UNIT 02

LEVELS 4-15
AND 17-32

	Sq.m	Sq.ft
Suite Area	134.90	1,452.05
Terrace Area	10.68	114.96
Total Area	145.58	1,567.01



Disclaimer: 1. All room dimensions are measured to structural elements and exclude wall finishes and construction tolerances. 2. All dimensions have been provided by our consultant architects. 3. All materials, dimensions & drawings are approximate. Information is subject to change without notice. 4. Actual suite area may vary from the stated area. Drawings not to scale. The developer reserves the right to make revisions. 5. Calculation of suite area is measured as the area bounded by the centre line of demising or partition walls separating one unit from another unit, the exterior face of all exterior walls, and the exterior face of the corridor wall enclosing the adjoining unit. 6. Calculation of balcony area is measured as the area bounded by the centre line of demising or partition walls separating one unit from another unit, the outmost face of the enclosing guard and the external face of the unit adjoining the balcony. 7. The units are measured at typical floor in the building. Columns may vary in size depending on the floor level. 8. Areas have been calculated in accordance with Dubai Land Department method of measurement as at October 2014.

دبي كريك رزیدنسز
DUBAI CREEK RESIDENCES

فـور دبي
DUBAI CREEK HARBOUR

الخيران
THE LAGOONS

DUBAI
HOLDING



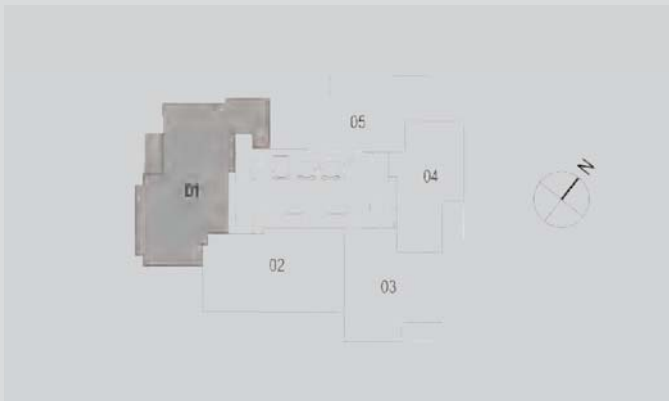
NORTH T₂

3 BEDROOMS
WITH TERRACE

UNIT 01

LEVELS 6
AND 26

	Sq.m	Sq.ft
Suite Area	167.23	1,800.05
Terrace Area	8.93	96.12
Total Area	176.16	1,896.17



Disclaimer: 1. All room dimensions are measured to structural elements and exclude wall finishes and construction tolerances. 2. All dimensions have been provided by our consultant architects. 3. All materials, dimensions & drawings are approximate. Information is subject to change without notice. 4. Actual suite area may vary from the stated area. Drawings not to scale. The developer reserves the right to make revisions. 5. Calculation of suite area is measured as the area bounded by the centre line of demising or partition walls separating one unit from another unit, the exterior face of all exterior walls, and the exterior face of the corridor wall enclosing the adjoining unit. 6. Calculation of balcony area is measured as the area bounded by the centre line of demising or partition walls separating one unit from another unit, the outmost face of the enclosing guard and the external face of the unit adjoining the balcony. 7. The units are measured at typical floor in the building. Columns may vary in size depending on the floor level. 8. Areas have been calculated in accordance with Dubai Land Department method of measurement as at October 2014.

دبي كريك رزیدنسز
DUBAI CREEK RESIDENCES

فـور دبي
DUBAI CREEK HARBOUR

الخيران
THE LAGOONS

DUBAI
HOLDING



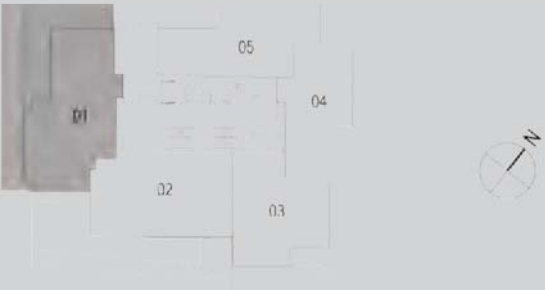
NORTH T₂

2 BEDROOMS
WITH TERRACE

UNIT 01

LEVEL 3

	Sq.m	Sq.ft
Suite Area	143.47	1,544.30
Terrace Area	113.41	1,220.74
Total Area	256.88	2,765.03



Disclaimer: 1. All room dimensions are measured to structural elements and exclude wall finishes and construction tolerances. 2. All dimensions have been provided by our consultant architects. 3. All materials, dimensions & drawings are approximate. Information is subject to change without notice. 4. Actual suite area may vary from the stated area. Drawings not to scale. The developer reserves the right to make revisions. 5. Calculation of suite area is measured as the area bounded by the centre line of demising or partition walls separating one unit from another unit, the exterior face of all exterior walls, and the exterior face of the corridor wall enclosing the adjoining unit. 6. Calculation of balcony area is measured as the area bounded by the centre line of demising or partition walls separating one unit from another unit, the outmost face of the enclosing guard and the external face of the unit adjoining the balcony. 7. The units are measured at typical floor in the building. Columns may vary in size depending on the floor level. 8. Areas have been calculated in accordance with Dubai Land Department method of measurement as at October 2014.

دبي كريك رزیدنسز
DUBAI CREEK RESIDENCES

دبي
DUBAI CREEK HARBOUR

الخيران
THE LAGOONS

DUBAI
HOLDING



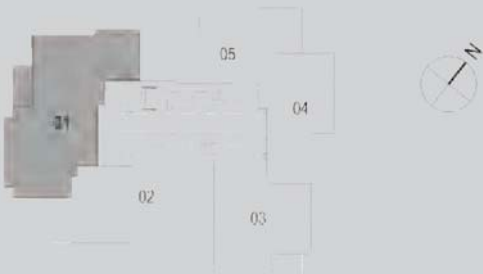
NORTH T₂

3 BEDROOMS
WITH TERRACE

UNIT 01

LEVELS 4-5, 7-15, 17-25
AND 27-32

	Sq.m	Sq.ft
Suite Area	170.52	1,835.46
Terrace Area	8.92	96.01
Total Area	179.44	1,931.48



Disclaimer: 1. All room dimensions are measured to structural elements and exclude wall finishes and construction tolerances. 2. All dimensions have been provided by our consultant architects. 3. All materials, dimensions & drawings are approximate. Information is subject to change without notice. 4. Actual suite area may vary from the stated area. Drawings not to scale. The developer reserves the right to make revisions. 5. Calculation of suite area is measured as the area bounded by the centre line of demising or partition walls separating one unit from another unit, the exterior face of all exterior walls, and the exterior face of the corridor wall enclosing the adjoining unit. 6. Calculation of balcony area is measured as the area bounded by the centre line of demising or partition walls separating one unit from another unit, the outmost face of the enclosing guard and the external face of the unit adjoining the balcony. 7. The units are measured at typical floor in the building. Columns may vary in size depending on the floor level. 8. Areas have been calculated in accordance with Dubai Land Department method of measurement as at October 2014.

خور دبي DUBAI CREEK HARBOUR

الخيران
THE LAGOONS

DUBAI
HOLDING



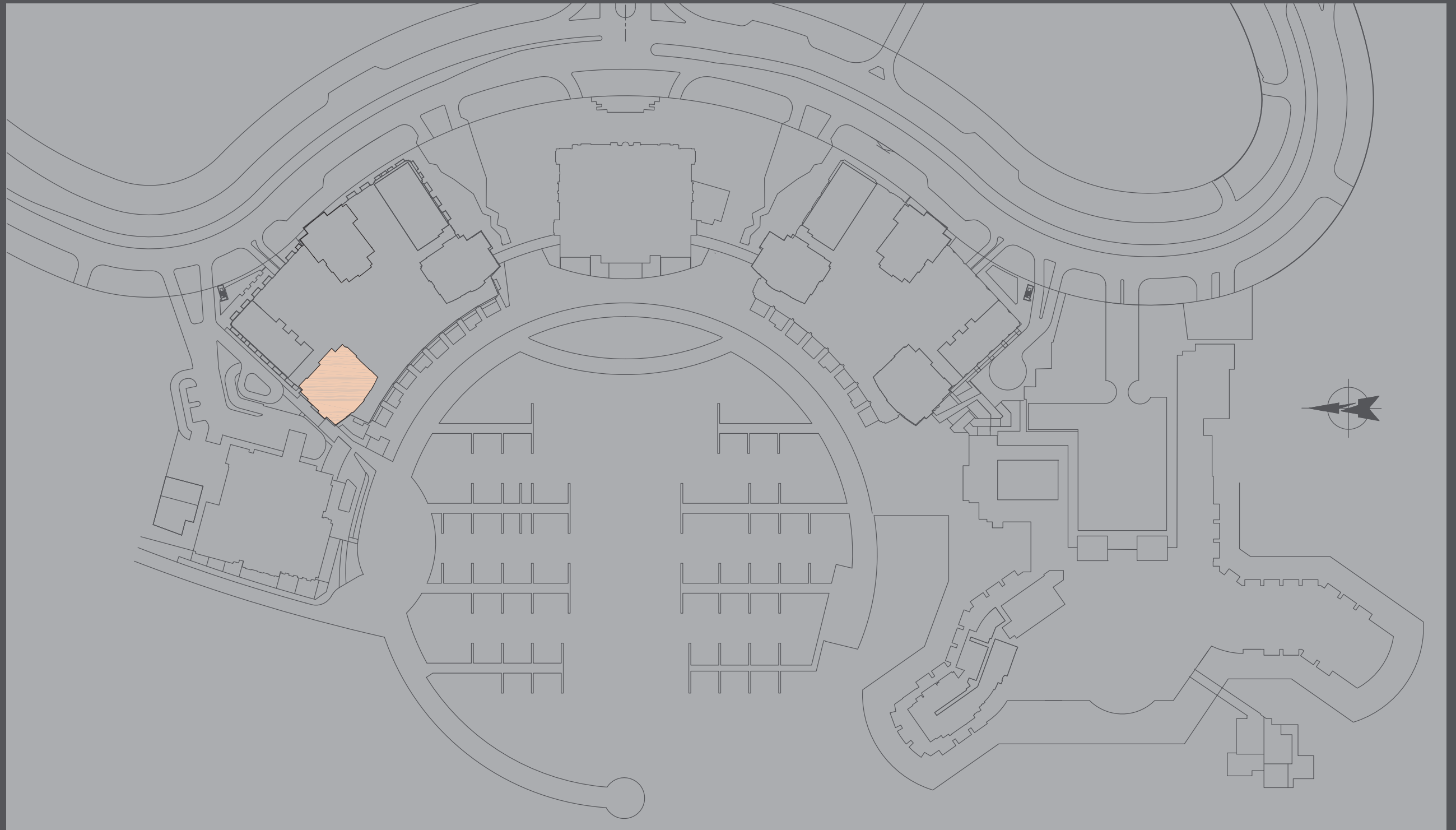
emaar.com

CONTACT DETAILS

For more information on
Dubai Creek Residences, please visit Emaar Pavilion,
Mohammed Bin Rashid Boulevard, Downtown Dubai
or call 800 36227 (UAE) +971 4 366 1688 (International)

FLOOR
PLANS
NORTH T₃

دبي كريك رزیدنسز
DUBAI CREEK RESIDENCES



دبي كريك رزیدنسز
DUBAI CREEK RESIDENCES

دبي
DUBAI CREEK HARBOUR

الخيران
THE LAGOONS

DUBAI
HOLDING



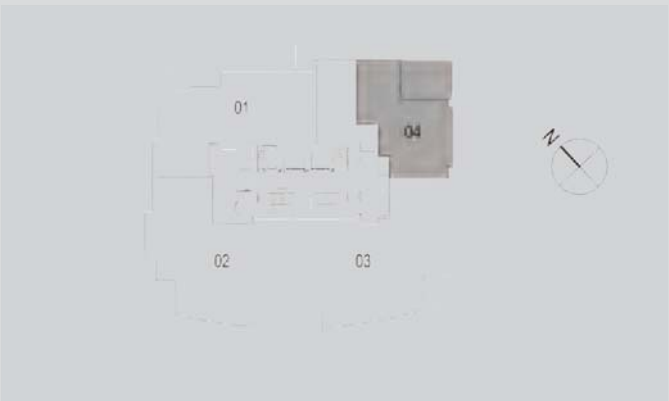
NORTH T₃

1 BEDROOM
WITH TERRACE

UNIT 04

LEVEL 3

	Sq.m	Sq.ft
Suite Area	90.34	972.41
Terrace Area	25.36	272.97
Total Area	115.70	1,245.38



Disclaimer: 1. All room dimensions are measured to structural elements and exclude wall finishes and construction tolerances. 2. All dimensions have been provided by our consultant architects. 3. All materials, dimensions & drawings are approximate. Information is subject to change without notice. 4. Actual suite area may vary from the stated area. Drawings not to scale. The developer reserves the right to make revisions. 5. Calculation of suite area is measured as the area bounded by the centre line of demising or partition walls separating one unit from another unit, the exterior face of all exterior walls, and the exterior face of the corridor wall enclosing the adjoining unit. 6. Calculation of balcony area is measured as the area bounded by the centre line of demising or partition walls separating one unit from another unit, the outmost face of the enclosing guard and the external face of the unit adjoining the balcony. 7. The units are measured at typical floor in the building. Columns may vary in size depending on the floor level. 8. Areas have been calculated in accordance with Dubai Land Department method of measurement as at October 2014.

دبي كريك رزیدنسز
DUBAI CREEK RESIDENCES

فـجـة دـبـي
DUBAI CREEK HARBOUR

الخـيـران
THE LAGOONS

DUBAI
HOLDING



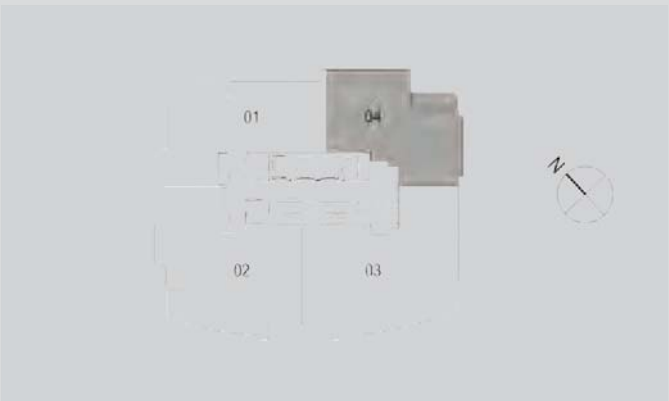
NORTH T₃

2 BEDROOMS
WITH TERRACE

UNIT 04

LEVELS 4-15
AND 17-27

	Sq.m	Sq.ft
Suite Area	137.61	1,481.22
Terrace Area	9.67	104.09
Total Area	147.28	1,585.31



Disclaimer: 1. All room dimensions are measured to structural elements and exclude wall finishes and construction tolerances. 2. All dimensions have been provided by our consultant architects. 3. All materials, dimensions & drawings are approximate. Information is subject to change without notice. 4. Actual suite area may vary from the stated area. Drawings not to scale. The developer reserves the right to make revisions. 5. Calculation of suite area is measured as the area bounded by the centre line of demising or partition walls separating one unit from another unit, the exterior face of all exterior walls, and the exterior face of the corridor wall enclosing the adjoining unit. 6. Calculation of balcony area is measured as the area bounded by the centre line of demising or partition walls separating one unit from another unit, the outmost face of the enclosing guard and the external face of the unit adjoining the balcony. 7. The units are measured at typical floor in the building. Columns may vary in size depending on the floor level. 8. Areas have been calculated in accordance with Dubai Land Department method of measurement as at October 2014.

دبي كريك رزیدنسز
DUBAI CREEK RESIDENCES

دبي
DUBAI CREEK HARBOUR

الخيران
THE LAGOONS

DUBAI
HOLDING



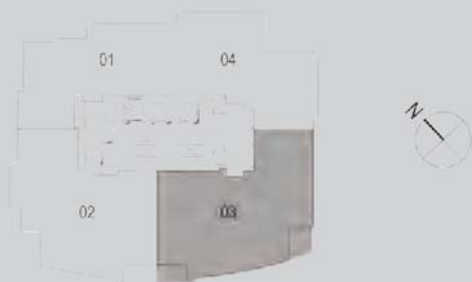
NORTH T₃

3 BEDROOMS
WITH TERRACE

UNIT 03

LEVELS 3-15
AND 17-27

	Sq.m	Sq.ft
Suite Area	197.62	2,127.16
Terrace Area	16.57	178.36
Total Area	214.19	2,305.52



Disclaimer: 1. All room dimensions are measured to structural elements and exclude wall finishes and construction tolerances. 2. All dimensions have been provided by our consultant architects. 3. All materials, dimensions & drawings are approximate. Information is subject to change without notice. 4. Actual suite area may vary from the stated area. Drawings not to scale. The developer reserves the right to make revisions. 5. Calculation of suite area is measured as the area bounded by the centre line of demising or partition walls separating one unit from another unit, the exterior face of all exterior walls, and the exterior face of the corridor wall enclosing the adjoining unit. 6. Calculation of balcony area is measured as the area bounded by the centre line of demising or partition walls separating one unit from another unit, the outmost face of the enclosing guard and the external face of the unit adjoining the balcony. 7. The units are measured at typical floor in the building. Columns may vary in size depending on the floor level. 8. Areas have been calculated in accordance with Dubai Land Department method of measurement as at October 2014.

دبي كريك رزیدنسز
DUBAI CREEK RESIDENCES

دبي
DUBAI CREEK HARBOUR

الخيران
THE LAGOONS

DUBAI
HOLDING



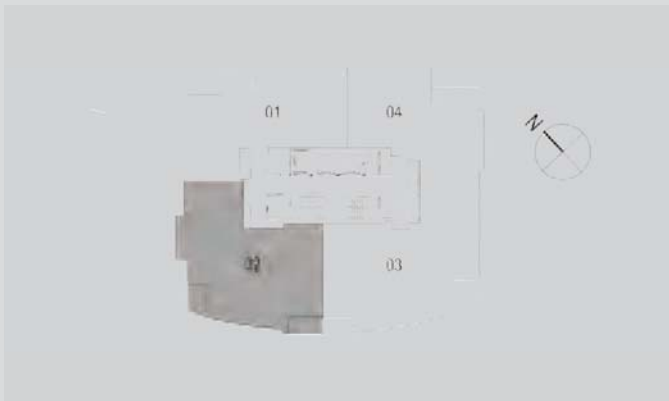
NORTH T₃

3 BEDROOMS
WITH TERRACE

UNIT 02

LEVELS 3-15
AND 17-27

	Sq.m	Sq.ft
Suite Area	182.49	1,964.31
Terrace Area	14.72	158.44
Total Area	197.21	2,122.75



Disclaimer: 1. All room dimensions are measured to structural elements and exclude wall finishes and construction tolerances. 2. All dimensions have been provided by our consultant architects. 3. All materials, dimensions & drawings are approximate. Information is subject to change without notice. 4. Actual suite area may vary from the stated area. Drawings not to scale. The developer reserves the right to make revisions. 5. Calculation of suite area is measured as the area bounded by the centre line of demising or partition walls separating one unit from another unit, the exterior face of all exterior walls, and the exterior face of the corridor wall enclosing the adjoining unit. 6. Calculation of balcony area is measured as the area bounded by the centre line of demising or partition walls separating one unit from another unit, the outmost face of the enclosing guard and the external face of the unit adjoining the balcony. 7. The units are measured at typical floor in the building. Columns may vary in size depending on the floor level. 8. Areas have been calculated in accordance with Dubai Land Department method of measurement as at October 2014.

دبي كريك رزیدنسز
DUBAI CREEK RESIDENCES

دبي
DUBAI CREEK HARBOUR

الخيران
THE LAGOONS

DUBAI
HOLDING



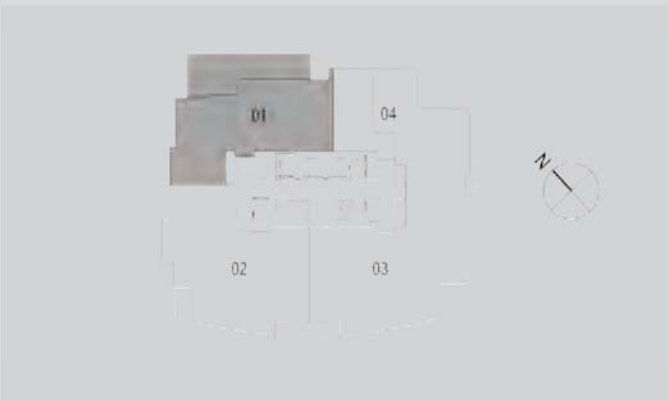
NORTH T₃

2 BEDROOMS
WITH TERRACE

UNIT 01

LEVEL 3

	Sq.m	Sq.ft
Suite Area	143.38	1,543.33
Terrace Area	48.91	526.46
Total Area	192.29	2,069.79



Disclaimer: 1. All room dimensions are measured to structural elements and exclude wall finishes and construction tolerances. 2. All dimensions have been provided by our consultant architects. 3. All materials, dimensions & drawings are approximate. Information is subject to change without notice. 4. Actual suite area may vary from the stated area. Drawings not to scale. The developer reserves the right to make revisions. 5. Calculation of suite area is measured as the area bounded by the centre line of demising or partition walls separating one unit from another unit, the exterior face of all exterior walls, and the exterior face of the corridor wall enclosing the adjoining unit. 6. Calculation of balcony area is measured as the area bounded by the centre line of demising or partition walls separating one unit from another unit, the outmost face of the enclosing guard and the external face of the unit adjoining the balcony. 7. The units are measured at typical floor in the building. Columns may vary in size depending on the floor level. 8. Areas have been calculated in accordance with Dubai Land Department method of measurement as at October 2014.

دبي كريك رزیدنسز
DUBAI CREEK RESIDENCES

دبي
DUBAI CREEK HARBOUR

الخيران
THE LAGOONS

DUBAI
HOLDING



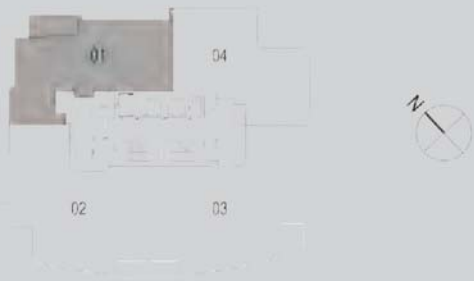
NORTH T₃

2 BEDROOMS
WITH TERRACE

UNIT 01

LEVELS 6-26

	Sq.m	Sq.ft
Suite Area	140.54	1,512.76
Terrace Area	12.36	133.04
Total Area	152.90	1,645.80



Disclaimer: 1. All room dimensions are measured to structural elements and exclude wall finishes and construction tolerances. 2. All dimensions have been provided by our consultant architects. 3. All materials, dimensions & drawings are approximate. Information is subject to change without notice. 4. Actual suite area may vary from the stated area. Drawings not to scale. The developer reserves the right to make revisions. 5. Calculation of suite area is measured as the area bounded by the centre line of demising or partition walls separating one unit from another unit, the exterior face of all exterior walls, and the exterior face of the corridor wall enclosing the adjoining unit. 6. Calculation of balcony area is measured as the area bounded by the centre line of demising or partition walls separating one unit from another unit, the outmost face of the enclosing guard and the external face of the unit adjoining the balcony. 7. The units are measured at typical floor in the building. Columns may vary in size depending on the floor level. 8. Areas have been calculated in accordance with Dubai Land Department method of measurement as at October 2014.

دبي كريك رزیدنسز
DUBAI CREEK RESIDENCES

فـور دبي
DUBAI CREEK HARBOUR

الخيران
THE LAGOONS

DUBAI
HOLDING



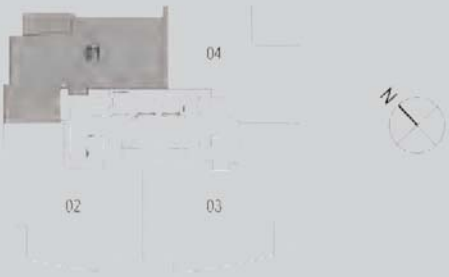
NORTH T₃

2 BEDROOMS
WITH TERRACE

UNIT 01

LEVELS 4-15
AND 17-27

	Sq.m	Sq.ft
Suite Area	143.38	1,543.33
Terrace Area	12.36	133.04
Total Area	155.74	1,676.37



Disclaimer: 1. All room dimensions are measured to structural elements and exclude wall finishes and construction tolerances. 2. All dimensions have been provided by our consultant architects. 3. All materials, dimensions & drawings are approximate. Information is subject to change without notice. 4. Actual suite area may vary from the stated area. Drawings not to scale. The developer reserves the right to make revisions. 5. Calculation of suite area is measured as the area bounded by the centre line of demising or partition walls separating one unit from another unit, the exterior face of all exterior walls, and the exterior face of the corridor wall enclosing the adjoining unit. 6. Calculation of balcony area is measured as the area bounded by the centre line of demising or partition walls separating one unit from another unit, the outmost face of the enclosing guard and the external face of the unit adjoining the balcony. 7. The units are measured at typical floor in the building. Columns may vary in size depending on the floor level. 8. Areas have been calculated in accordance with Dubai Land Department method of measurement as at October 2014.

خور دبي DUBAI CREEK HARBOUR

الخيران
THE LAGOONS

DUBAI
HOLDING



emaar.com

CONTACT DETAILS

For more information on
Dubai Creek Residences, please visit Emaar Pavilion,
Mohammed Bin Rashid Boulevard, Downtown Dubai
or call 800 36227 (UAE) +971 4 366 1688 (International)